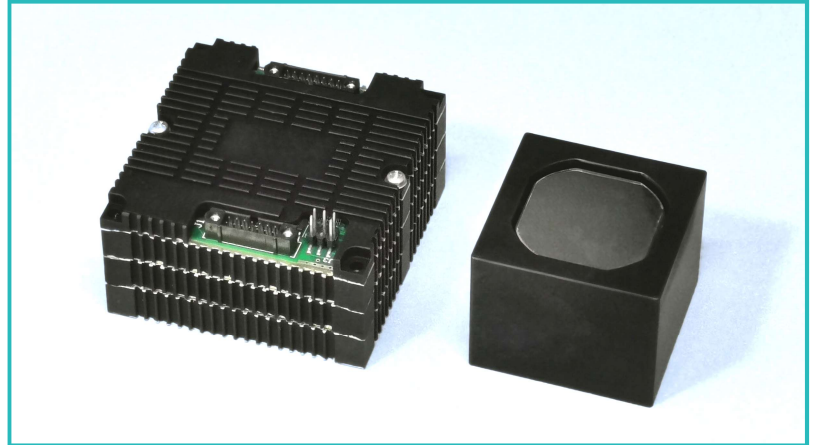


Features:

- Two axes with same dynamics
- High bandwidth
- Compact size
- Flexure guides for zero-play movement
- Low noise closed-loop controller
- High rigidity, suitable for heavy mirrors

Applications:

- Laser beam steering, pointing
- Microscanning
- Line of sight stabilization
- Image stabilization
- Tracking



FSM-1400U with Ulsis Piezo Controller Board

Specifications:

Max. Angular Stroke	1400 urad
Loaded Resonance Frequency (with 9 g quartz glass mirror)	>2500 Hz
Distance between pivot point and mirror surface	10 mm
Weight	165 g
Size	48x48x38 mm
Actuator Type	Multilayer Piezoactuator
Drive Voltage	150 V
Sensor	Strain Gauge
Resolution	> 12 bits
Cross-coupling	< 1%
Operating Temperature	-40 ... +70 °C

Note: This product is customizable for different sizes, strokes and frequencies.

