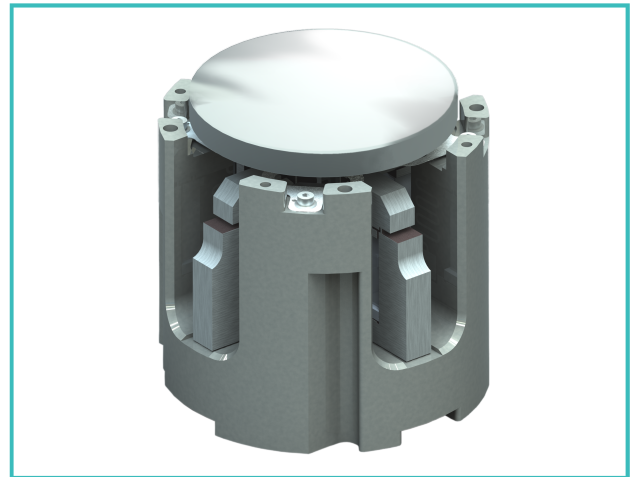


#### Features:

- Suitable for heavy mirrors
- Two axes with same dynamics
- High bandwidth
- Compact size
- Flexure guides for zero-play movement

#### Applications:

- Laser beam steering
- High energy laser weapon
- Tracking
- Line of sight stabilization



#### Specifications:

Max. Angular Stroke	5 mrad
Loaded Resonance Frequency (with Ø60 mm x 6 mm SiC mirror)	> 750 Hz
Distance between pivot point and mirror surface	13 mm
Weight	980 g
Size	74Øx73 mm
Actuator Type	Multilayer Piezoactuator
Drive Voltage	150 V
Sensor	None
Resolution	12 bits
Cross-coupling	< 0.5%
Operating Temperature	-40 ... +65 °C

**Note:** This product is customizable for different sizes, strokes and frequencies.

